

PROJECT SNAPSHOT

PROJECT OVERVIEW

Venture Global CP2 LNG, LLC (CP2 LNG) and Venture Global CP Express, LLC (CP Express), both wholly owned subsidiaries of Venture Global LNG, Inc. (Venture Global LNG), are proposing to build, own and operate the CP2 LNG and CP Express Project. The CP2 LNG liquefied natural gas (LNG) terminal will be located on an approximately 546-acre site in Cameron Parish, Louisiana. A connecting natural gas pipeline, the CP Express pipeline, is also being proposed from Jasper County, Texas to the proposed LNG facility in Cameron Parish.

The CP2 LNG facility will be a natural gas liquefaction export terminal with a nameplate export capacity of 20 million metric tonnes per annum (MTPA) of LNG and a peak capacity of approximately 24 MTPA. The facility will include 18 LNG blocks to liquefy domestically produced natural gas received from the new CP Express pipeline and four full containment LNG storage tanks to allow for the storage and delivery of LNG as needed to LNG carriers for export. There will be two marine loading docks for LNG carriers to berth at the facility and on-site power generation.

CP Express will consist of approximately 85.1 miles of new 48-inch-diameter natural gas pipeline and approximately 5.9 miles of new 24-inch-diameter lateral pipeline to connect the CP2 LNG terminal to the existing natural gas pipeline grid in east Texas and southwest Louisiana. One new compressor station is proposed to be constructed east of Vinton, Louisiana.

PROPOSED PIPELINE ROUTE



PROJECT BENEFITS

CP2 LNG will be the second LNG export project developed by Venture Global LNG in Cameron Parish, with the first being the Calcasieu Pass Project. Together they represent more than \$10 billion USD of direct investment in the Parish. The CP2 LNG and CP Express Project will support the company's long-term development of clean and reliable North American energy supplies by providing additional markets for U.S. natural gas producers.

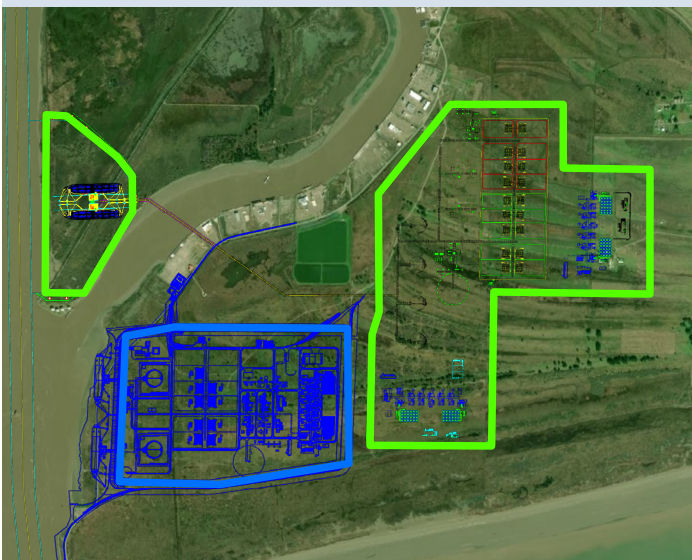
TERMINAL SITE AND ROUTE SELECTION

The site and route for the proposed CP2 LNG terminal site and CP Express natural gas pipeline were identified after careful analysis. Safety, environmental, land-use compatibility, constructability, environmental justice and cultural resources were all evaluated, and the Federal Energy Regulatory Commission (FERC) routing guidelines were applied when determining the proposed locations.

The CP2 LNG terminal facility will be located adjacent to Venture Global LNG's Calcasieu Pass LNG facility. The associated marine facility will be located on Monkey Island, between the Calcasieu Ship Channel and Calcasieu Pass. The proposed pipeline route will originate in Jasper County, Texas and pass through Newton County, Texas and Calcasieu Parish, Louisiana before it ends at the CP2 LNG terminal in Cameron Parish.

A number of additional efforts will take place, such as civil and environmental field surveys, site evaluations, and ongoing landowner and stakeholder consultations, to determine the final optimal pipeline route.

PROPOSED SITE LAYOUT



FOCUS ON SAFETY

The safety of the public, our employees and contractors, and the environment is the project's top priority. The CP2 LNG terminal will be built based on advanced design and with proven technologies that have operated safely for decades. The facility will also be inspected by regulatory agencies, such as the FERC and the Department of Transportation's Pipeline and Hazardous Materials Safety Administration (PHMSA) during construction and also during operations. The CP Express pipeline will be constructed to comply with all safety standards outlined by PHMSA. Once in service the pipeline will be monitored by both aerial and ground surveillance and inspected regularly as part of a pipeline safety and integrity program.

PROTECTING THE ENVIRONMENT

The CP2 LNG and CP Express Project is committed to environmental stewardship and will work to minimize potential impacts to responsibly coexist with the local environment and our communities. As such, preservation of valuable natural resources and successful restoration of the land along the pipeline route is another top priority for the project, and best management practices will be developed and implemented in these efforts.

COMMITMENT TO THE COMMUNITY

The CP2 LNG and CP Express Project is deeply committed to the communities where it operates, the fair treatment of all stakeholders and being a good neighbor. We believe in open, proactive and ongoing consultation with the community, its leaders and other stakeholders to ensure local needs and concerns are addressed. Throughout the development of the project, there will

be opportunities for meaningful involvement of landowners and stakeholders to learn about the Project, ask questions and provide input for consideration in the decision making process.



In Cameron Parish, we are proud of the Cooperative Endeavor Agreement we have with Cameron Parish Police Jury as well as our partnerships with many local companies to develop a 58-acre waterfront park, named Lighthouse Bend. The new recreational development will create a unique destination for families, sportsmen, adventurers and workers as well as an economic boost to the area.

REGULATORY PROCESS

The CP2 LNG and CP Express Project will be regulated principally by the FERC. Venture Global LNG submitted a pre-filing request to the FERC on January 21, 2021, and the FERC accepted Venture Global LNG's request on February 17, 2021, setting in motion the environmental review process. Other agencies with regulating authority include the U.S. Department of Energy, U.S. Department of Transportation, U.S. Coast Guard (USCG), U.S. Army Corps of Engineers (USACE), the Louisiana Department of Environmental Quality (LDEQ), the Louisiana Department of Natural Resources (LDNR), Railroad Commission of Texas, the Texas Commission on Environmental Quality and various other agencies of the states and parishes/counties.

PROJECT TIMELINE

Early 2021	September 2021	December 2022	February 2023	April 2023	Second Quarter 2025	Second Quarter 2026
FERC Pre-filing Letter submitted and FERC issues Notice of Pre-Filing Commencement	Project files Application with FERC	FERC issues final Environmental Impact Statement (EIS)	FERC issues order granting certificate of public convenience and necessity	Construction Begins	In service; initial commencement of operations	Full commencement of operations

About Venture Global LNG

Venture Global LNG is a long-term, low-cost provider of U.S. LNG to be supplied from resource rich North American natural gas basins. The company is currently constructing or developing more than 50 MTPA of production capacity in Louisiana to provide clean, affordable energy to the world. Venture Global CP2 LNG, LLC and Venture Global CP Express, LLC are wholly-owned subsidiaries of Venture Global LNG, Inc.

FOR MORE INFORMATION
Jessica Wickett
1 (800) 514-0833
www.venturegloballng.com

FOR LANDOWNER INFORMATION
landowner@venturegloballng.com
1 (800) 514-0833